



10W 10X10 IP67 24V Neon Flex

TECHNICAL

Watts Per Metre	10W/15W
Input Voltage	24v DC
Colour Temp	3000K/3000k-6000K/RGB
Beam Angle	120°
IP Rating	IP67
Size	10mm (W) x 10mm (H) (not including end cap)
Bending Radius	300mm
CRI	>90
Lamp Expectancy	>50,000hrs
Wiring	Parallel
Dimmable	Yes
LED Chip Type	2835
Max Run (2 power feed)	10/26m
Roll Length	10m
Cutting Increments	50mm
Mounting	Aluminium Profile clips/bendable profile/Clip
Operating Temperature	0 - + 60° Celcius
Ambient Temperature	-20° - + 50° Celcius
Warranty	3 Years Replacement



COMPATIBLE CONTROLLERS



SMART 5 IN 1 CONTROLLER



LED CONTROLLER



REMOTE CONTROLLER



PIR SENSOR STAIR LIGHT CONTROLLER

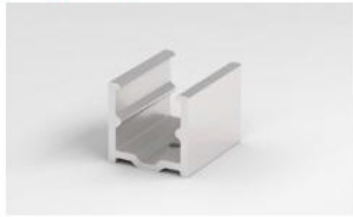
COMPATIBLE CONTROLLERS

Image	Part Number	Colour Temp	Lumens	Description
	TLI-NL10103D24-3000k	3000k	786lm	3D Bend
	TLI-NL1010V24-3-6000k	3-6000k	827lm	Top Bend
	TLI-NL1010V24-RGB	RGB	1030lm	Top Bend

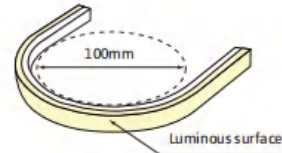
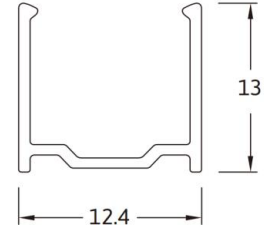
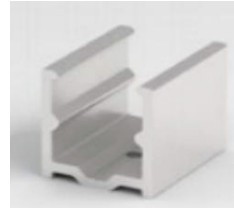
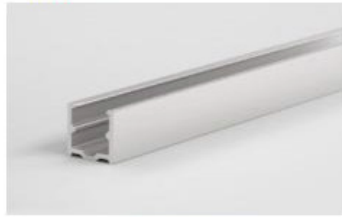
Image	Part Number	Description
	TLI-NL1010V24-CLIPS	clips
	TLI-NL1010V24-CHANNEL	2 meters
	TLI-NL1010-BP	per meter

10W 10X10 IP67 24V Neon Flex

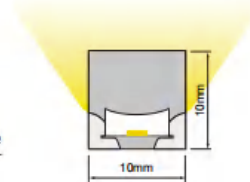
Aluminum Mounting clip



Aluminium Profile



Min bending diameter

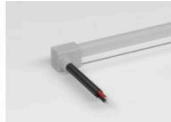


Cable Entry

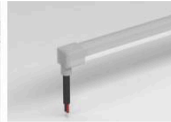
Silicone end cap



Front Cable Entry



Side Cable Entry

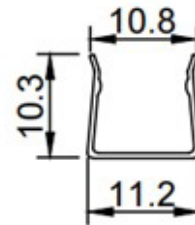


Bottom Cable Entry

Integral End Cap



Front Cable Entry



Dimension

